

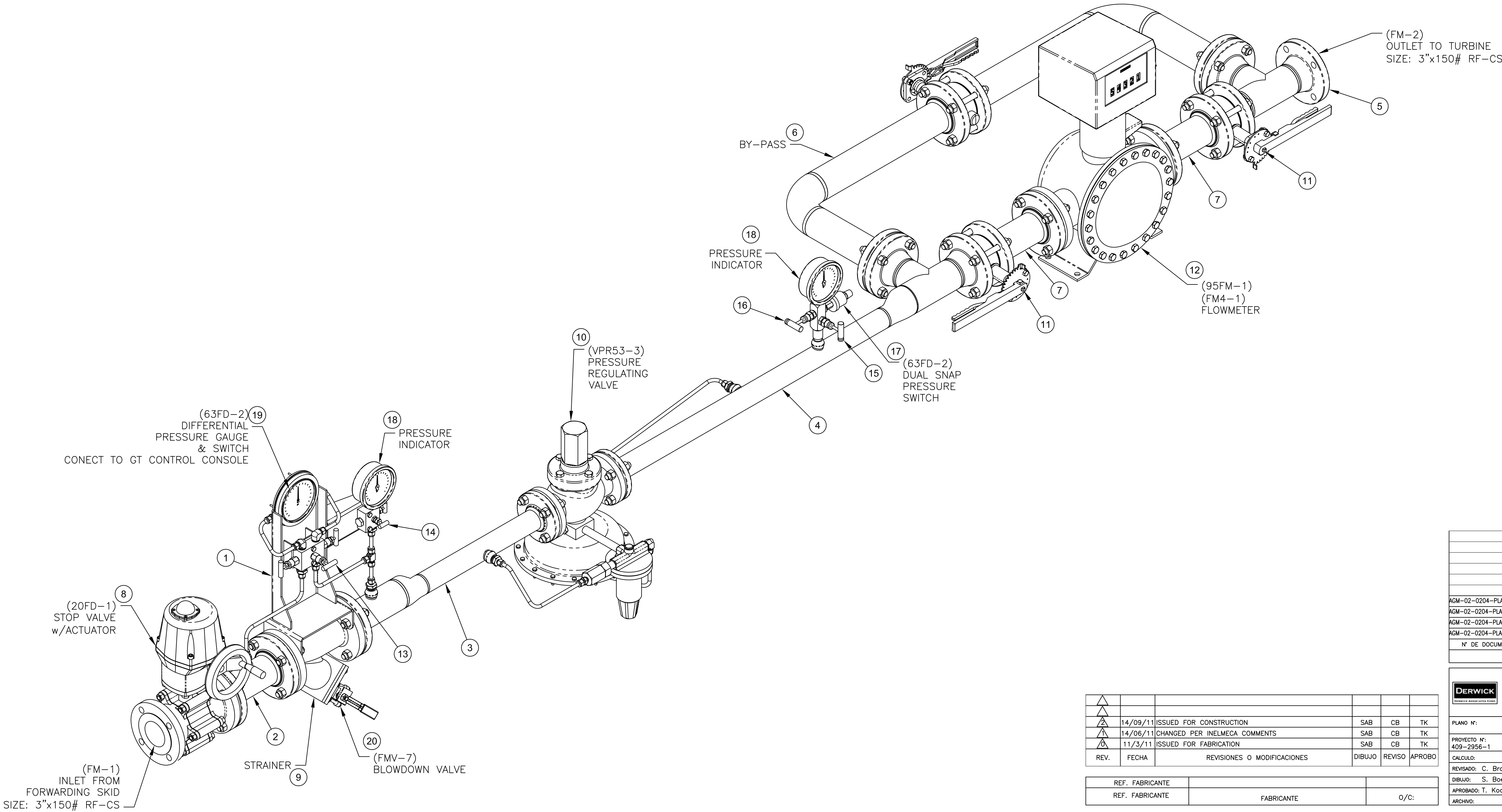
2  
AGM-02-0204-PLA-M-0075  
N° PLANO:

NOTES:

- PIPE SUPPORTS PRVIDED BY INSTALLER.
- OUTLET TO BE NEAR ACCESSORY BASE.
- FOR PROCESS SPECIFICATIONS REFER TO AGM-02-0204-PLA-P-0048 LIQUID FUEL P&ID.
- ASSEMBLED WEIGHT = 772 lbs [350 kg]
- FOR WIRE NTERCONNECTION REFER TO AGM-02-0204-PLA-G-0058 INTERCONNECTION WIRING DIAGRAM & AGM-02-0204-PLA-E-0006 (CABLE SUMMARY).
- FOR INSTRUMENT SET POINTS REFER TO AGM-02-0204-PLA-I-0046 (DEVICE SUMMARY)

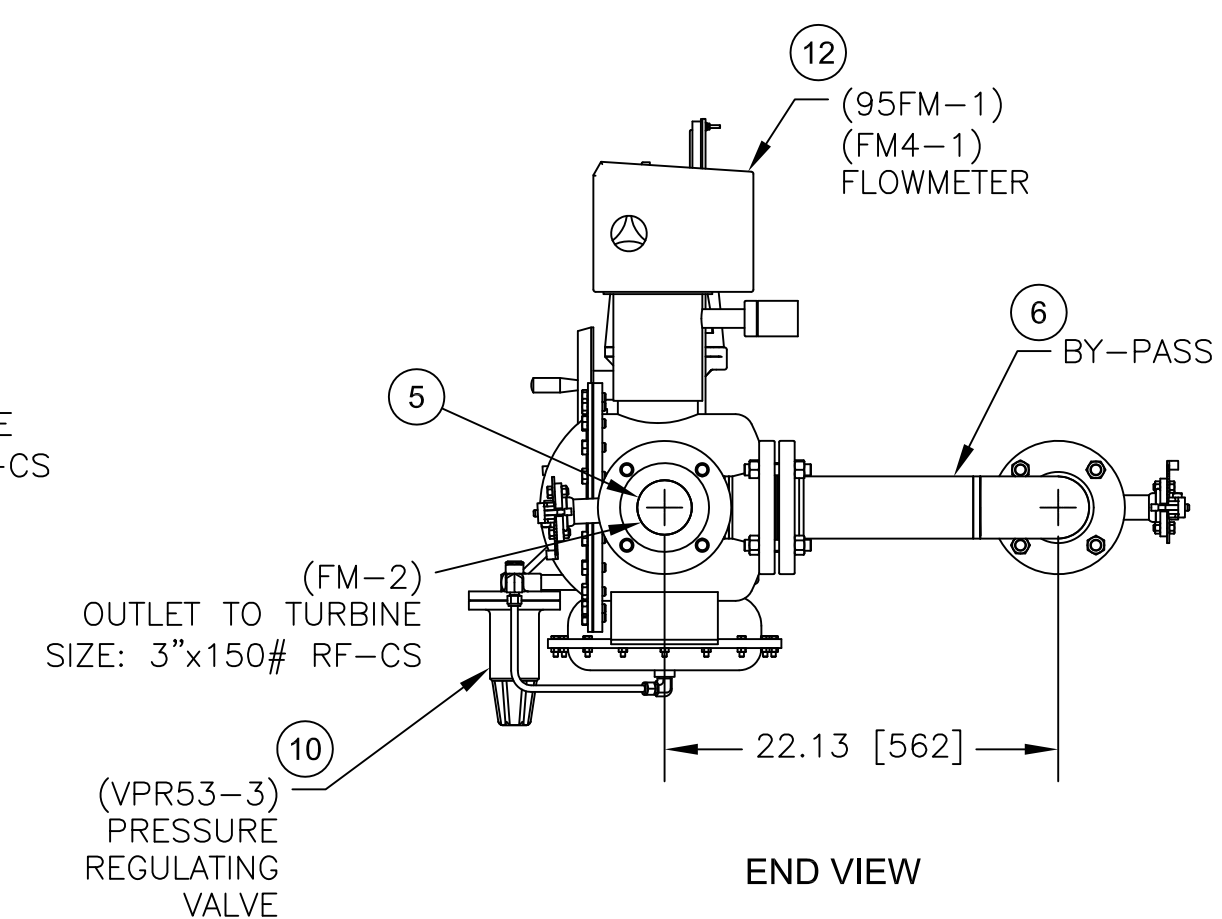
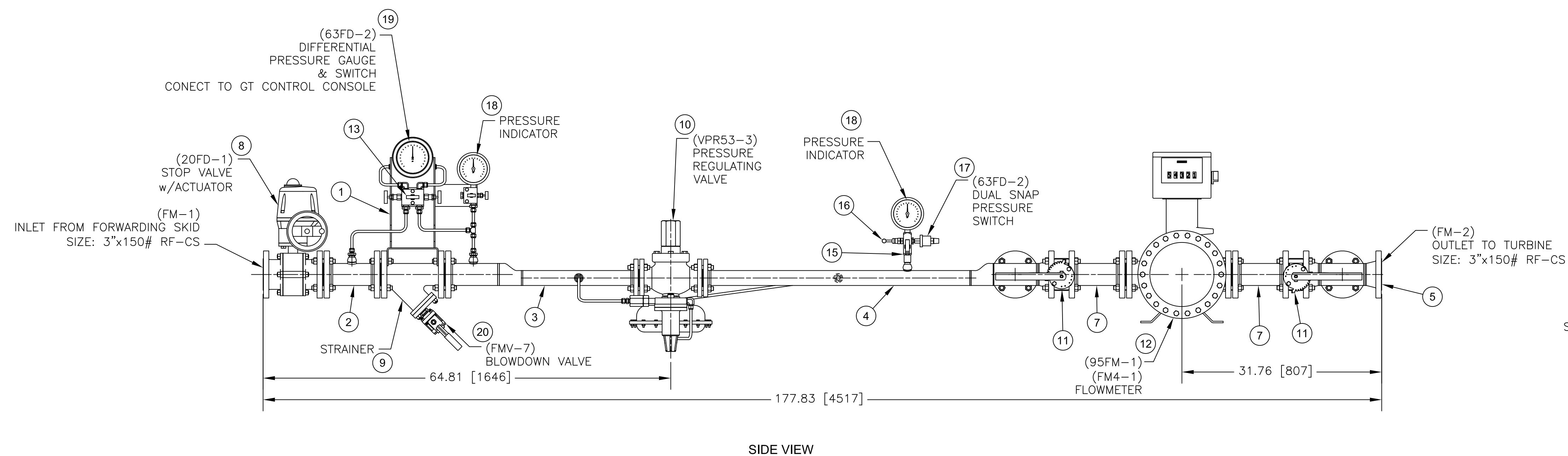
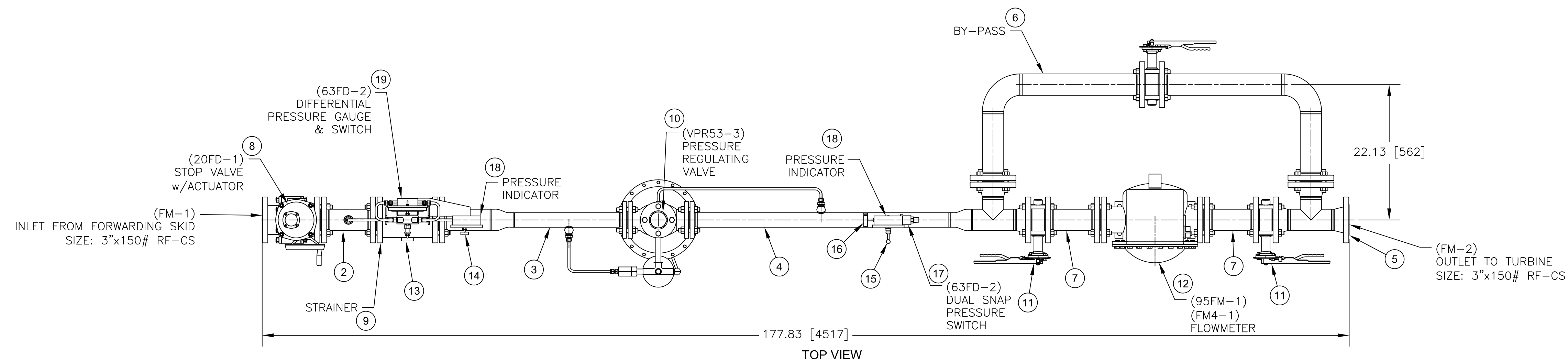
PARTS LIST					
ITEM	QTY	DEVICE No	PART No	DESCRIPTION	VENDOR
1	1	----	SFM7EA-610	GAUGE MOUNT	Pro Energy Services
2	1	----	SFM7EA-710	STOP VALVE INLET SPOOL	Pro Energy Services
3	1	----	SFM7EA-720	PRESSURE VALVE INLET SPOOL	Pro Energy Services
4	1	----	SFM7EA-730	PRESSURE VALVE DISCHARGE SPOOL	Pro Energy Services
5	1	----	SFM7EA-740	DISCHARGE SPOOL	Pro Energy Services
6	1	----	SFM7EA-750	BY-PASS SPOOL ASSEMBLY	Pro Energy Services
7	2	----	SFM7EA-760	FLOW METER INLET/DISCHARGE SPOOL	Pro Energy Services
8	1	20FD-1	CRC733F-3F	CR-TEC ACTUATED STOP VALVE - FAIL SAFE (3"x150 RF-CS)	CR-TEC
9	1	----	781-CS	Y-STRAINER 80MESH (3"x150 RF-CAST SS)	MUELLER
10	1	VPR53-3	FS1098-472/150RF2/L/WS1	PRESSURE REDUCING REGULATOR VALVE (2"x150 RF-CS)	FISCHER
11	2	----	B5110-02-F02-13/HL	HIGH PERFORMANCE BUTTERFLY VALVE (3"x150)	CAMRON
12	1	95FM-1 FM4-1	B070ACAAAACDAEA	FLOWMETER MODEL B-72D 425GPM (3"x150 RF-CS)	BRODIE METER CO
13	1	----	SS-V3NBF8	3-WAY VALVE (1/2" FNPT)	SWAGelok
14	1	----	SS-V2NBF8	2-WAY BLOCK & BLEED VALVE (1/2" FNPT)	SWAGelok
15	1	----	M5VDC-44	GAUGE VALVE (1/2" NPT)	ANDERSON GREENWOOD & CROSBY
16	1	----	V6VDC-4	GAUGE VALVE (1/2" NPT)	ANDERSON GREENWOOD & CROSBY
17	1	63FD-3	6611G8007	DUAL SNAP PRESSURE SWITCH (1/4" MNPT)	CCS
18	2	----	SGL-G052N	PRESSURE GAUGE (0-100 PSI)	DWYER INSTRUMENTS
19	1	63FD-2	120-SC-12	DIFFERENTIAL PRESSURE GAUGE w/SWITCH (0-10 PSID)	MID-WEST INSTRUMENT
20	1	----	SS-A65TF12	FIRE SAFE BALL VALVE - SS (3/4" FNPT)	SWAGelok

IMPORTANTE  
ESTE PLANO FUE ELABORADO EN AUTOCAD V.2008  
CUALQUIER MODIFICACION REALIZADA EN CAMPO  
DEBERA SER NOTIFICADO A LA UNIDAD  
RESPONSABLE.  
QUEDA PROHIBIDO CORREGIR ESTE PLANO SIN  
AUTORIZACION DE ESTA UNIDAD.  
ALL DIMENSIONS IN BRACKETS [ ] ARE  
MILLIMETER, EXPRESSED DIMENSIONS  
ARE INCHES



△					
△					
△	14/09/11	ISSUED FOR CONSTRUCTION	SAB	CB	TK
△	14/06/11	CHANGED PER INELMECA COMMENTS	SAB	CB	TK
△	11/3/11	ISSUED FOR FABRICATION	SAB	CB	TK
REV.	FECHA	REVISIONES O MODIFICACIONES	DIBUJO	REVISO	APROBO
REF. FABRICANTE					
REF. FABRICANTE			FABRICANTE		O/C:






AGM-02-0204-PLA-I-0046 DEVICE SUMMARY					
AGM-02-0204-PLA-E-0006 CABLE SUMMARY					
AGM-02-0204-PLA-E-0058 INTERCONNECTION WIRING DIAGRAM					
AGM-02-0204-PLA-P-0048 LIQUID FUEL SYSTEM P&ID					
N° DE DOCUMENTO	DESCRIPCIÓN	REV.	FECHA		
DOCUMENTOS DE REFERENCIA					
<div><div><div>DERWICK</div><div>ProEnergy</div><div>CORPOLEEC</div><div>Electricidad de Caracas</div><div>AGENCIA NACIONAL DE INGENIERIA Y PROTECCION</div><div>SENECA</div></div><div>AMPLIACIÓN DE LA CAPACIDAD DE GENERACIÓN Y TRANSPORTE DE ELECTRICIDAD EN LA ISLA DE MARGARITA FUEL MANAGEMENT DUAL FUEL MOD. UNITS 298034 &amp; 298035 (MECHANICAL ARRANGEMENT)</div></div>					
PROYECTO N°: 409-2956-1	REV:	PROYECTO:	ESCALA: NONE	PLANO No:	
REVISADO: C. Brown	CALCULO:	FECHA: 14/09/11		AGM-02-0204-PLA-M-0075	
DIBUJO: S. Boerckel	REVISADO: J. Castillo	DISK N°			
APROBADO: T. Koontz	DIBUJO:	ESC./PLOTEO:			
ARCHIVO:	APROBADO: M. Monticelli	ARCHIVO:	PAGINA: 1	DE: 2	REV. 2



△						
△						
△	14/09/11	ISSUED FOR CONSTRUCTION	SAB	CB	TK	
△	14/06/11	CHANGED PER INELMECA COMMENTS	SAB	CB	TK	
△	11/3/11	ISSUED FOR FABRICATION	SAB	CB	TK	
REV.	FECHA	REVISIONES O MODIFICACIONES	DIBUJO	REVISO	APROB	

REF. FABRICANTE		
REF. FABRICANTE	FABRICANTE	O/C:

[illegible]

 		  	
<b>AMPLIACIÓN DE LA CAPACIDAD DE GENERACIÓN Y TRANSPORTE DE ELECTRICIDAD EN LA ISLA DE MARGARITA</b> <b>FUEL MANAGEMENT</b> <b>DUAL FUEL MOD. UNITS 298034 &amp; 298035</b> <b>(MECHANICAL ARRANGEMENT)</b>			
PLANO No.:	REV:		
PROYECTO No.: 409-2956-1			
CALCULO:	PROYECTO:	ESCALA:	PLANO No.:
REVISADO: C. Brown	CALCULO:	FECHA: 14/09/11	AGM-02-0204-PLA-M-007
DIBUJO: S. Boerckel	REVISADO: J. Castillo	DISK. N°:	
APROBADO: T. Koozart	DIBUJO: M. Montalini	ESQ. PROYECTO:	
		PAGINA: 2 DE: 2	REV. 1